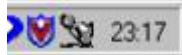



Who Calls

General

WhoCalls will use the selected [modem](#) to detect the [CallerID](#) of a calling party. Caller ID (caller identification or CID, and more properly calling number identification CNID, also known as CLID=calling line identity or CLIP=calling line identification presentation) is a telephone service that transmits the caller's number to the called party's telephone equipment during the ringing signal or when the call is being set up but before the call is answered. It will not answer the call, just display the caller information (if transmitted). It will also not block the modem, so you can still use it to dial out to the Internet for example. To be able to use this application you need to subscribe to the CallerID service from your local telephone company and you need a modem that supports CallerID.

After startup the application displays an icon in the System Tray (Right part of task bar).



By right clicking on this icon you can access the menu of the application. Clicking on the close  icon will not exit the application but minimize it. To quit select File->Exit.

WhoCalls can work either in [active](#) mode or in [passive](#) mode.

Active Mode



In active mode WhoCalls uses its own database to display caller information and the associated picture of a caller.

You can add, edit and delete a record by selecting it and using the *Record* option.

To add a new entry
first select the *Record->New* option,
enter the Display name and the CallerID
then select *Save changes*.

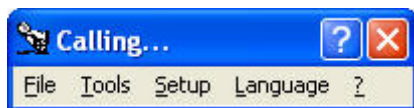
The CallerID is the 10-digit phone number formatted as phone number.

The associated photo of a record is stored as 200x200 pixel bitmap under its Caller Name in the application directory.

IE the photo of a caller named " Jennifer Lopez" will be stored as "Jennifer Lopez.BMP" in the application directory.

For callers not yet in the database the system creates a default picture. 😊
To change this picture simply replace the created bitmap file with your own.

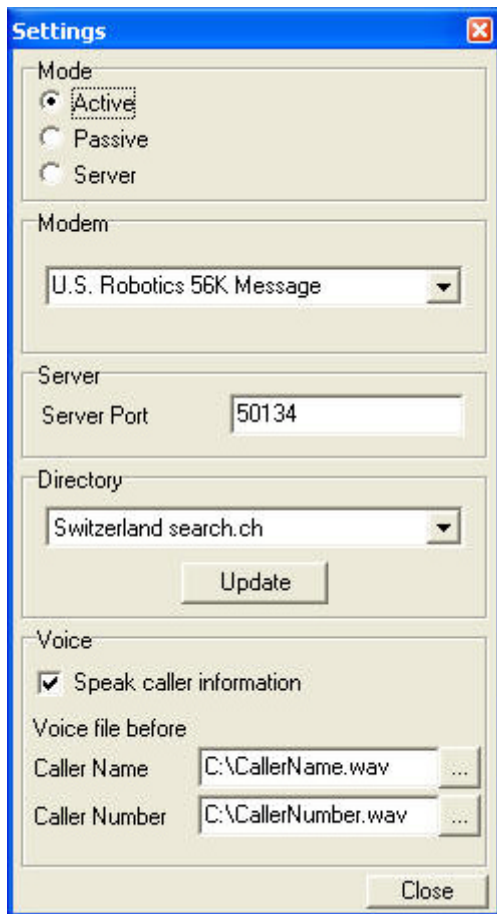
Passive Mode



The passive mode allows you to use an external database or application to store you caller information. WhoCalls will monitor the incoming line as usual but when a call is detected, transfer the [CallerID](#) to the selected external application through ActiveX or DDE. To set up which application the CallerID is transferred to, use the [Setup menu item](#).

See the [passive mode samples](#) section for examples on how to use the passive mode.

Tools->Preferences

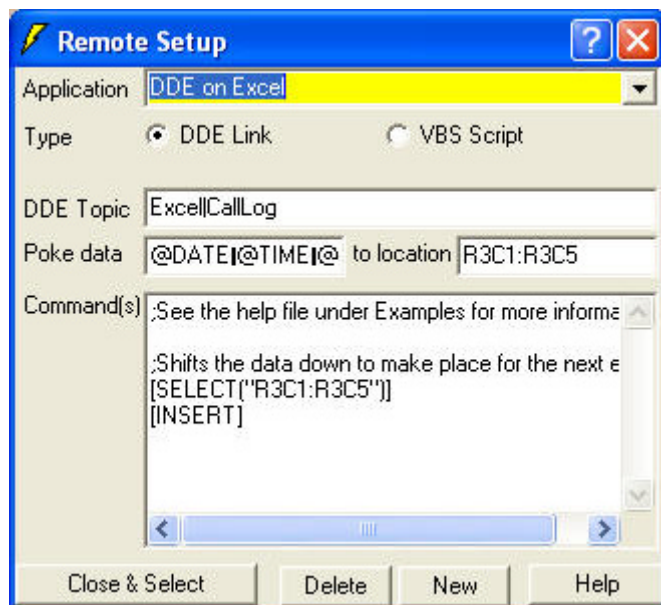


The settings window allows you to configure all aspects of WhoCalls.

Mode	Define here if you want to run WhoCalls in active , passive or server mode
Modem	WhoCalls will scan the Windows modem database and list all modems configured there. JUst choose your modem from the list. Please make sure that you have configured your modem with the latest modem driver. Unfortunately modem suppliers still seem to sell their modems with outdated drivers, which often do not support CallerID. The only way to be sure that you have the right driver is to download the newest driver from the Internet. You may even need to experiment with different drivers. IE the 3COM U.S.Robotics 56K Message Modem does not support Caller ID with its own driver (<i>U.S.Robotics 56K Message</i>) but detects CallerID with <i>the U.S.Robotics 56K Voice EXT</i> driver.
Server Port	This is the port to be used for the communication between the server and the client when running in server mode
Directory	If the Caller Name is not transmitted by the phone (normal case) , WhoCalls will try to access an internet directory of the selected country to retrieve the stored information for the Caller Number received. You need to select a directory of your country here for this option to work. As we continuously try to add new directories, you may also <i>Update</i>

	this list. If your country is still not on the list, contact us and we will see if we can add it.
Voice	If you select the option <i>Speak caller information</i> , WhoCalls will playback the received information on your loudspeaker. The actual information is preceded by the voice files you can select below. For more options on changing the voice for the read back please refer to the Windows control panel under Speech-> Text To Speech or go to the Microsoft Speech web site at http://www.microsoft.com/speech/speech2007/default.msp . Here you can also download other voices and/or languages.

Passive mode setup



WhoCalls comes with pre-configured samples for MsAccess, Excel and TimeMatters. You can add a new application by selecting the NEW button and entering the required information.

Application	Name of the application, usually the executable name without the .EXE
Type	Use of DDE or VBS (Visual Basic Script)
Topic	The value for this field is dependent on your application. Excel and MsAccess use the name of the file to open; other applications may use a different string. Please consult the documentation of your application for the correct syntax.
Start if not...	If this option is selected WhoCalls will try to start the

selected application if it is not yet running when a call comes in. As the startup may take some time it is advisable to leave the application running all the time.

EXE Path	Path of the executable file of the application
DB Path	Path of the database file of the application
Poke Data	String or variable to send to application. If you need to send data across multiple columns separate the data with the TAB character.
to location	Destination of the data transfer. IE Rung/Column in Excel
Command(s)	List of DDE or VBS commands to execute on the remote application. All commands need to be supported by the remote application. The commands will be executed after the data has been "poked", so you may use it to instruct the remote application to treat the new information.

Empty lines and lines that start with a semicolon (;) are ignored.

By pressing the Close&Select button the selected application setting becomes the active setting.

Variables

The following variables are predefined

@CID	Caller ID number string	(if supported)
@CIN	Caller ID name string	(if supported)
@DATE	Current date	
@TIME	Current Time	
@PORT	Selected modem driver	

Passive mode samples

VBS Call to Excel

The Excel sample uses the Samples\CallLog.xls database to record the caller information for an incoming caller. It is a simple example that logs every call through its date/time and CallerID. The advantage of using VBS rather than DDE is that Excel does not need to be kept open.

The syntax is exactly the normal VBS (Visual Basic Script) syntax except that the [variables](#) are replaced before the execution of the script.

```
const StartRow = 4 'First row to use
Dim ex, I

Set ex=CreateObject("Excel.Application")
ex.Workbooks.Open "C:\WhoCalls\Samples\CallLog.xls" 'Open file

'Find first empty Line
I=StartRow
while ex.ActiveSheet.Range("A" & I).Value <>" "
    I=I+1
wend

'Record values
ex.ActiveSheet.Range("A" & I).Value = "@DATE" 'Set Time
ex.ActiveSheet.Range("B" & I).Value = "@TIME" 'Set Date
ex.ActiveSheet.Range("C" & I).Value = "@CID" 'Set CallerID
ex.ActiveSheet.Range("D" & I).Value = "@CIN" 'Set CallerID
Name
ex.ActiveSheet.Range("E" & I).Value = "@PORT" 'Set Port
ex.ActiveWorkbook.Save
ex.Quit
WScript.Quit(0)
```

VBS Call to Outlook

This sample shows on how to send the CallerID information to MsOutlook to display the associated Outlook entry.

Please refer to the VBS code for more information.

Note(s):

- If no contact is found the Outlook form will not open
- For the sample to work, your Outlook contact must have one phone number configured that corresponds exactly to the phone number that is transmitted by WhoCalls. Therefore an Outlook contact with a phone number defined as +441234567890 will not be found when a call arrives as 123-456-7890. Please check first on how your phone company transmits the phone number and adjust your contacts accordingly.

VBS Call to MySQL

This sample connects to a MySQL database to transmit the received information. Please refer to the VBS code for more information.

DDE to MsAccess

The MsAccess sample uses [DDE](#) and the Samples\CallerCenter.mdb database to display the caller information of an incoming caller.

If MsAccess is not yet running it will be started by using the information in the EXE Path and DB Path field of the [Setup](#).

No data will be "poked" (transferred) as all data transfer is handled by the commands.

```
1 ;Note: @CID is the 10 digit number with no formatting
   ;Alert user
   [Beep]
2 ;Add new entry to caller log
   [RunSQL "INSERT INTO CallLog (dDate,tTime,cCID) VALUES
   ('@DATE','@TIME','@CID)"]
3 ;Open the form "Clients" and advance to the record with the
   detected CallerID
   [OpenForm Customers,,, CallerID = "@CID"]
4 ;Set the CallerID info in case it is a new record
   [SetCallerIDValue]

5
```

Line 1 shows the usage of a comment by using a semicolon in front of the line.

Line 2 requests MsAccess to emit a beep.

Line 3 runs a SQL query that adds the Date, Time and CallerID information to a table called CallLog in MsAccess. This table will be used to monitor the frequency of the calls received by every caller.

Line 4 opens the form Customers and displays the record with the matching CallerID.

Line 5 runs a macro that enters the CallerID information into the right field if a new record is created.

DDE to Excel

The Excel sample uses the Samples\CallLog.xls database to record the caller information for an incoming caller. It is a simple example that logs every call through its date/time and CallerID.

If Excel is not yet running it will be started by using the information in the EXE Path and DB Path field of the [Setup](#)

As soon as the CallerID is available it is transferred "poked" to the Excel sheet CallLog.

The "Poke data" field is set to

```
@DATE{TAB}@TIME{TAB}@CID{TAB}@CIN{TAB}@PORT
```

which sends the Date, Time, CallerID, CallerName and Port information across five columns, the destination being from cell R3C1 to R3C5.

Then two commands are executed.

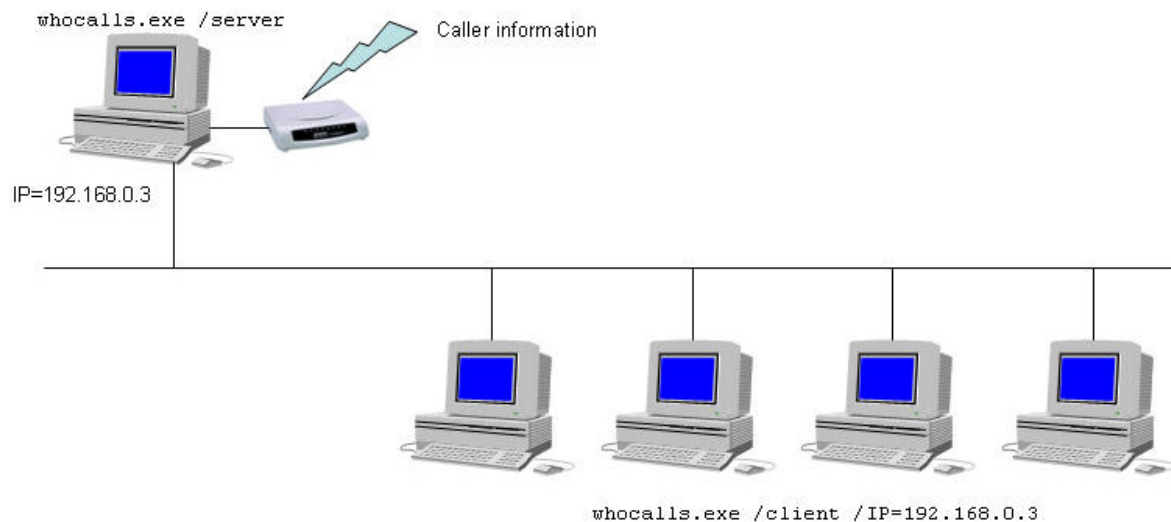
```
      ;Shifts the data down to make place for the next entry  
1  [SELECT("R3C1:R3C5")]  
   [INSERT]  
2
```

Line 1 selects the cells R3C1 to R3C5 and Line 2 inserts an empty line above. This ensures that the next time information is transmitted it will not overwrite the previous data.

Server Mode

WhoCalls can also run in server environment. This means that you may have WhoCalls running on one PC with a modem attached and distribute the received caller information to other PCs running WhoCalls in client mode. The clients do not need to have a modem as they receive the required information over the network.

The following schema shows a possible configuration:

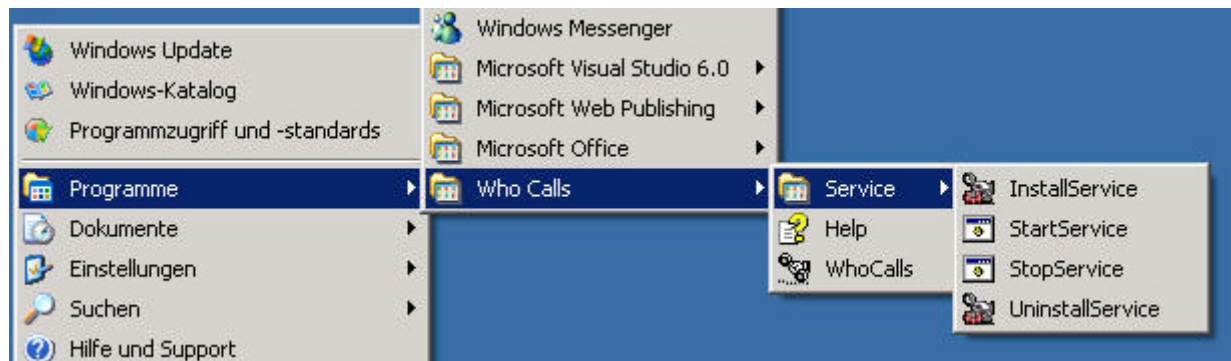


The server starts WhoCalls with the `/server` command line while the clients start it with `/client` and the IP address of the server.

The server can still be used as normal WhoCalls station in [active](#) or [passive](#) mode. If the server only acts as gateway without displaying any information, then select the server mode in the [settings](#).

IMPORTANT: Please make sure that the port used for the communication between the client and the server (Default: 50134) is not blocked by a firewall, this for the server and all the clients. Instead of opening the port you can also enable the communication for the two processes `..\whocalls\WhoCalls.exe` and `..\whocalls\WhoCallsService.exe`

Server Mode as Windows service



For additional security you can also run the WhoCalls server as Windows service. This will run the WhoCalls server as background task and just let it distribute its information it receives through the modem.

To install WhoCalls as service please follow those steps:

1. Start WhoCalls.exe without command line.
2. Configure the modem, server port and directory you want to use in the [settings](#).
3. Close WhoCalls.exe
4. Install the service with the short cut provided under ..\WhoCalls\Service\InstallService
5. Start the service with the short cut provided under ..\WhoCalls\Service\StartService
6. Check with the Taskmanager that the process WhoCallsService.exe (runs under the SYSTEM account) is running. If not please go to the Windows services and try to start the service manually.

From then on the service will start every time you start your computer. To uninstall the service again please follow those steps:

1. Stop the service with the short cut provided under ..\WhoCalls\Service\StoptService
2. Uninstall the service with the short cut provided under ..\WhoCalls\Service\UninstallService

Dynamic Data Exchange (DDE)

DDE has three parts: the name of the application; the file name or topic; and the cell range, value, field, or data that's referred to. The following illustration shows the parts of a remote reference formula and the use of the required separator character (|).

Topic: Excel|Sheet1
Item: R1C1

You can either get data from a DDE server, send data to the DDE server or execute a macro on the DDE server.

The program that contains the data you want to link must support Dynamic Data Exchange (DDE). To determine whether your program supports DDE or to learn the DDE name and topic information for the program, contact the software vendor of the program.

Note(s):

- To be able to read values from an application through DDE the application needs to be running.
- To access data on a remote computer on a network use the NetDDE format as topic.
IE \\ComputerName\Application|Topic
- When using Excel please note that the Topic and Item is language dependent. This means that for instance in German a call to cell A1 in Excel becomes Excel|Tabelle1 and Z1S1

Caller ID

To use WhoCalls with Caller ID you need two things:

- * Caller ID Service From your local telephone company
- * A MODEM or hardware device that supports Caller ID

The first is required as only your local telephone company can supply this data. The second is required so that the data sent by the Telephone Company can be passed to software programs for processing.

Many current MODEMS offer support for Caller ID. The key question is always what setup string to use to enable Caller ID (virtually every MODEM disables Caller ID as the default).

For most MODEMS, the string `AT#CID=1` will enable Caller ID. On some voice based MODEMS the string is `AT#CLS=8#CID=1`. Look in the user's manual for your MODEM to see if any setup string is referenced or mentioned.

Other common setup strings are:

- * `AT#CID=2`
- * `AT%CCID=1`
- * `AT%CCID=2`
- * `AT+VCID=1`
- * `AT#CC1`
- * `AT*ID1`

The best way to test is to use a terminal data program. In Windows 3.X, the TERMINAL program (usually in the accessories folder) can be used, (be sure you set the COM port to the PORT your MODEM uses). In Windows 95 the HyperTerminal program can be used.

To use HyperTerminal do the following:

- 1) Select "HyperTerminal" by navigating through the Start button to "Programs," then "Accessories," then "HyperTerminal"
- 2) Double click on "hyperterm" or "hyperterm.exe"
- 3) Name the new connection "test," and select OK
- 4) Change the "connect using" to Direct to COM X, were X is the COM port used by the Caller ID device
- 5) Click on OK on the screen for port settings

To test your MODEM, do the following:

1. Type the string `ATZ`, (OK should appear on the screen)
2. Enter the Caller ID string to be tested, (`AT#CID=1` for most modems)
3. If OK results, continue; If ERROR results the modem may not support Caller ID; try a different setup string
4. Have someone call you and watch the terminal screen
5. If Caller ID is working, you will see the word RING, followed by one or more additional data lines. The word RING will then continue to appear for each incoming ring.
6. If Caller ID is not working, you will only see the word RING for each incoming ring. If this is the case try another setup string and go back to step two.

The most common result, when Caller ID data works, is the following:

```
RING  
DATE = xxxxx  
TIME = xxxx  
NMBR = xxxxxxxxx  
NAME = xxxxxxxxx  
RING  
RING ...
```

Order and registration

To order a copy of WhoCalls or to check its current price, please go to www.mawnet.com/order.html

After your order has been approved, you will receive from us within 24 hours an e-mail with your serial key that unlocks your evaluation copy into a fully licensed version. This key also entitles you to future upgrades, so please store it in a safe place.

How can I get more information?

Support

For all support questions please refer to our support forum on www.mawnet.com/support.html

Please note:

- We can not provide phone support for our evaluation copies, please use the forum above
- Always indicate your name and e-mail address whenever you contact us

MAW Software Ltd. International

E-Mail info@mawnet.com
Web <http://www.mawnet.com>

(general inquiries)

European Headquarters Switzerland

MAW Software Ltd.
Hofacker 19
8808 Pfäffikon
Switzerland

Phone: +41-(0)55-4201386
Fax: +41-(0)55-4201387

UK Support line

Phone: +44-(0)7092288534
Fax +44-(0)7092288539